



Surrounding You with Exceptional Protection™

Our vast arsenal of high-performance products means that we can offer a solution specific to your immediate need or challenge. And our broad technical expertise and commitment means you can expect a dedicated partner before, during and after the job.



TANK LINING SYSTEMS



ENVIRONMENTAL COATINGS



CHEMICAL PROOFING SYSTEMS



COMPOSITE STRENGTHENING SYSTEMS



VITRIFIED INDUSTRIAL CERAMICS

CALL US TODAY for an expert consultation on the needs and requirements of your facility.

Blome International

1450 Hoff Industrial Drive | O'Fallon, MO 63366 | USA

Office +1 636 379 9119
Fax +1 636 409 1314
E-mail support@blome.com

Andy Bernard, President
Direct +1 314 560 7777
E-mail andy@blome.com

PULP & PAPER INDUSTRY

Corrosion-Resistant Lining Systems

CORROSION-RESISTANT TILING SYSTEMS | POLYMER CONCRETES
VINYL ESTER & NOVOLAC EPOXY TANK COATINGS

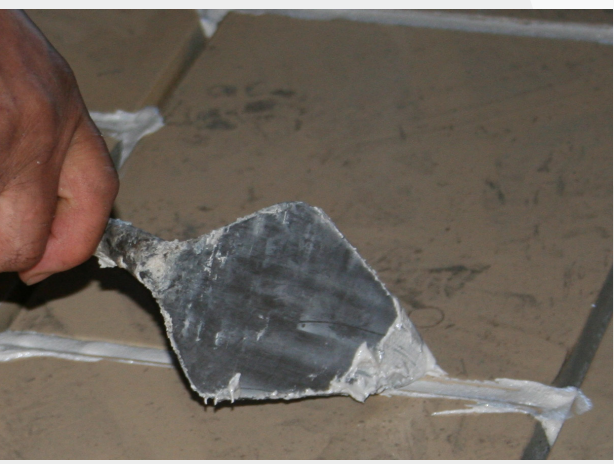
INDUSTRY LEADING, PROVEN PROTECTION

www.blome.com

A **UMERIS** COMPANY
ASSOCIATED POLYMERS GROUP



WE KNOW YOUR INDUSTRY | WE'VE GOT YOUR BACK | WE'RE THERE FOR YOU 24/7 | WE'RE READY TO GET STARTED



TILING SYSTEM

VERSI-CHEM GLAZED VITRIFIED TANK TILE

APPLICATIONS: *Tile chests*

- Unparalleled physical properties and chemical resistance
- Exceeds all industry standards for performance, quality, dimensional tolerance and flatness according to all relevant DIN/EN/ISO standards
- Available in US inventory for immediate need

CP-1 10HB HIGH BOND VINYL ESTER MORTAR

APPLICATIONS: *Bleach tower lining and flooring, washer vats, tile chests, process floors, liquor storage*

- Excellent bond strength to acid brick and tile
- Resistant to strong oxidizers such as chlorine, chlorine dioxide, hypochlorite bleaches; oxidizing acids such as nitric and chromic; phosphoric and hydrochloric acid
- Can also be used to repair bug holes
- 9 month shelf life when properly stored

MEMBRANE 72 TROWELLABLE URETHANE MEMBRANE

APPLICATIONS: *Bleach towers, tile chests*

- Impermeable and flexible in temperatures -60°F to 180°F
- Suitable for temperature excursions up to 220°F
- Will withstand temperatures of at least 235°F when used behind brick or ceramic tile

POLYMER CONCRETE

CP-300 NON SHRINK VINYL ESTER POLYMER CONCRETE

APPLICATIONS: *Bleach tower flooring, process flooring and curbing, washer vats, liquor storage, pump pads, trenches and sumps*

- No curing shrinkage
- Superior resistance to strong mineral acids including 65% nitric, 70% sulfuric, 37% hydrochloric
- Resistance to caustic solutions, oxidizing bleaches, and splash and spill exposure to many organic acids, such as glacial acetic
- Suitable for temperatures up to 220°F
- Can be supplied in pre-cast shapes

COATINGS & LININGS

TL-280 SPRAYABLE FLAKE GLASS VINYL ESTER LINING

APPLICATIONS: *Turpentine recovery tanks, bleach towers, tile chests, white liquor clarifiers, tall oil tanks*

- Maximizes permeation resistance and physical properties
- Withstands high temperatures, wet gas and chemical exposures
- Suitable for up to 380°F in dry service
- Carefully selected and sized glass flake reinforcement



TL-220S SPRAYABLE FLAKE GLASS VINYL ESTER LINING

APPLICATIONS: *Tall oil tanks, digesters*

- Flake glass is chemically treated, which maximizes permeation resistance & physical properties
- Withstands high temperatures (180°F), wet gas and chemical exposures
- Available in additional formulations including high molecular weight, abrasion resistant, high temperature (360°F), sprayable, trowellable and mat reinforced.

TL-222S SPRAYABLE CARBON FILLED VINYL ESTER COATING & LINING

APPLICATIONS: *Black liquor storage*

- Ideal for steel and concrete
- High temperature-resistant
- Graphite reinforcement maximizes permeation resistance and physical properties

TL-91GF FAST CURING HIGH BUILD NOVOLAC EPOXY COATING & LINING

APPLICATIONS: *Tall oil tanks*

- 100% solids
- For demanding tank lining applications that require high film builds and short cure times at low temperature
- Can build from 15 mils to 50 mils in single or multiple coats
- Immersion temperature resistance of 180°F
- Offers high impact resistance, resistance to cracking when exposed to torsional twisting
- Excellent edge coat properties, good surface tolerance, and superior bond strength to steel and concrete

These are our most commonly used products within pulp and paper mills. Visit www.blome.com to see our entire product line.